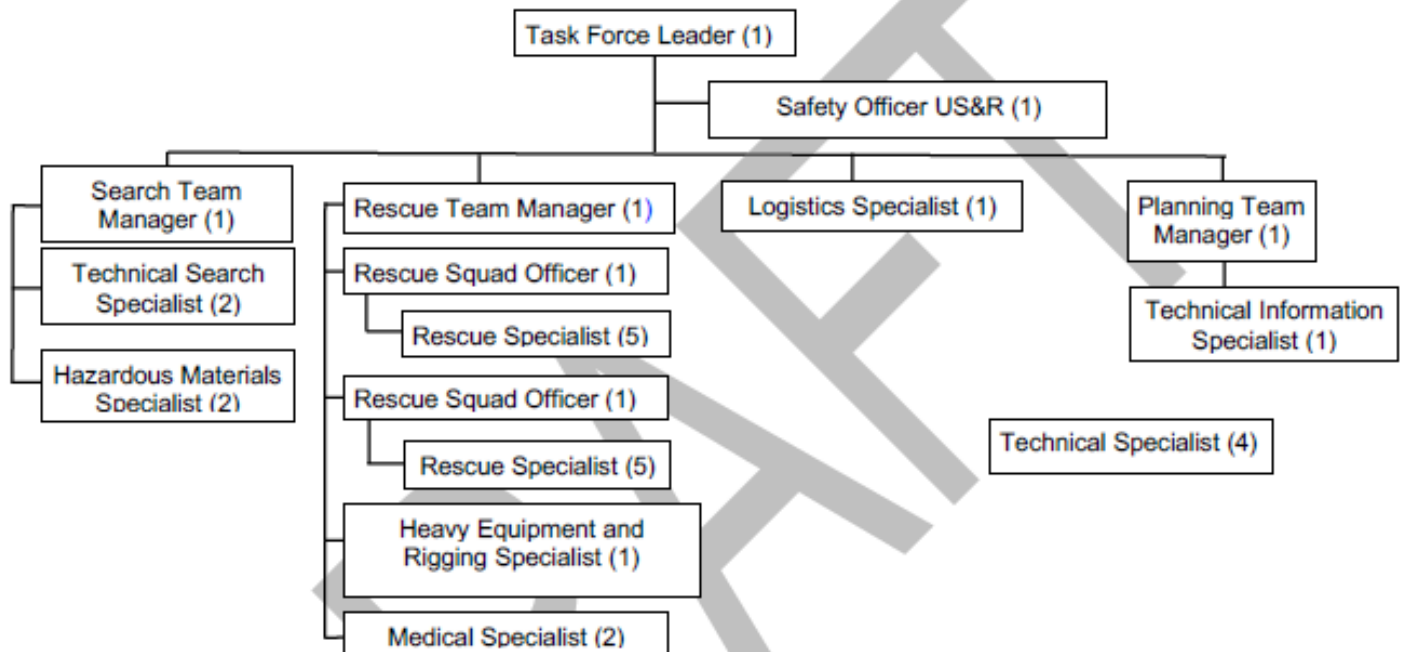


US&R TASK FORCE MODELS

California Regional US&R Task Force (30 Personnel)



The California Regional US&R Task Force is comprised of 30 members and is configured to rapidly respond to incidents within the state. As an initial attack and extended attack resource, California Regional US&R Task Forces deploy within 45 minutes of activation. Emphasis is given to speed of deployment and equipment is non-palletized for quick access and deployment. The California Regional US&R Task Force coordinates and conducts search and rescue response efforts for all hazards, including locating, accessing, medically stabilizing, and extricating survivors from damaged structures. They operate in environments with and without infrastructure, including compromised access to roadways, utilities, transportation, and limited availability for shelter, food, and water. They are capable of search and rescue operations involving the collapse or failure of Heavy Floor, Pre-cast Concrete and Steel Frame Construction, high angle rope rescue (including high-line systems), confined space rescue (permit required), mass transportation (subway, rail, bus, etc.) rescue, trench/excavation, heavy rigging, wide area search and mud & debris flow. California Regional US&R Task Forces are self-sustaining for 24 hours and deployable for up to 14 days.