

# **MONTEREY PARK FIRE DEPARTMENT USAR FEMA SURVEY123 TRAINING**

**SARCOP AND QUICKCAPTURE (PRESENTATION 1/2)**

**PRESENTED BY CAPTAIN JON GIN**



Monterey Park Fire Department

# Project Overview

- Sandbox Dashboard
- ArcGIS QuickCapture
- ArcGIS Survey123



- ArcGIS Survey123
- CalOES Dashboard
- "Windshield Surveys"



Los Angeles Area Fire Chiefs Association  
Regional Training Group



[LAAFC.org](http://LAAFC.org)

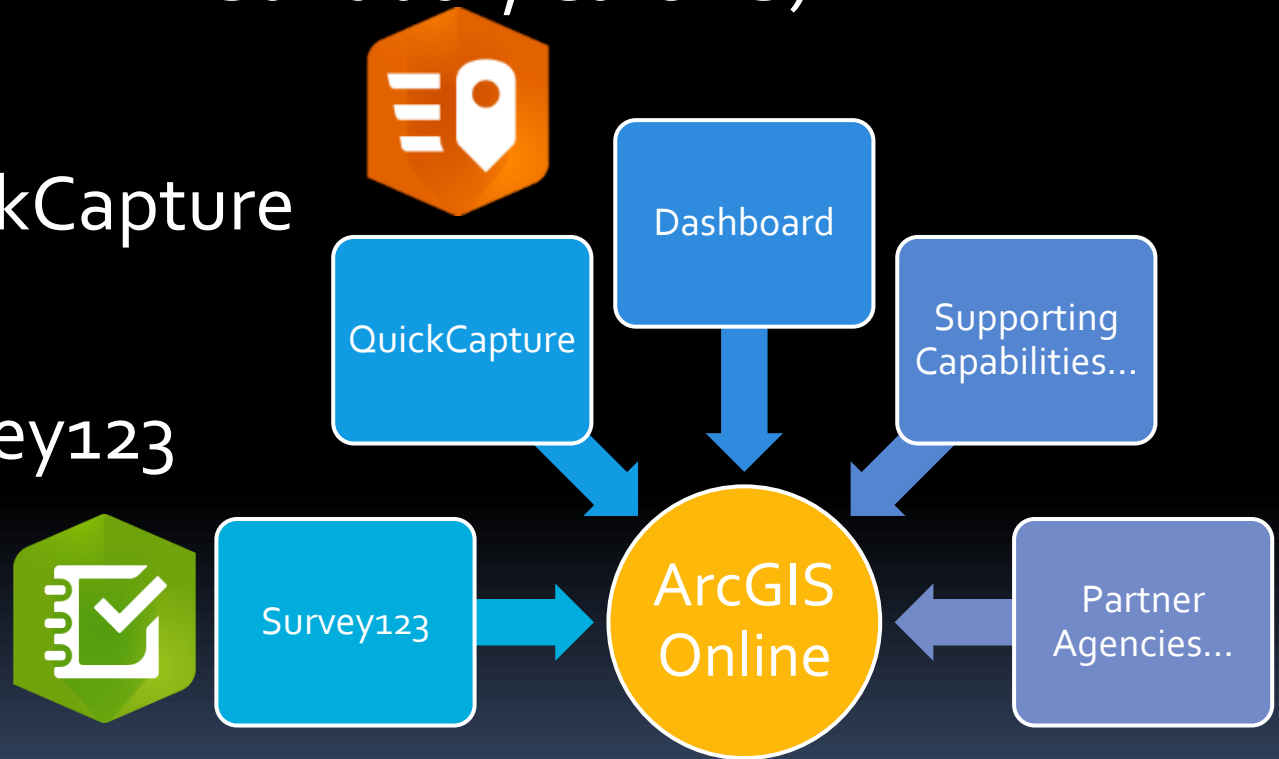
Los Angeles Area Fire Chiefs Association



Monterey Park Fire Department

# Tools Utilized

- Dashboard (FEMA Sandbox, CalOES)
- ArcGIS QuickCapture
- ArcGIS Survey123



# RTG WINDSHIELD SURVEYS



Monterey Park Fire Department

# RTG WINDSHIELD SURVEYS

## LAAFC Windshield Survey Dashboard

Select a category

None

Critical to Life Safety

High Importance

Not Critical

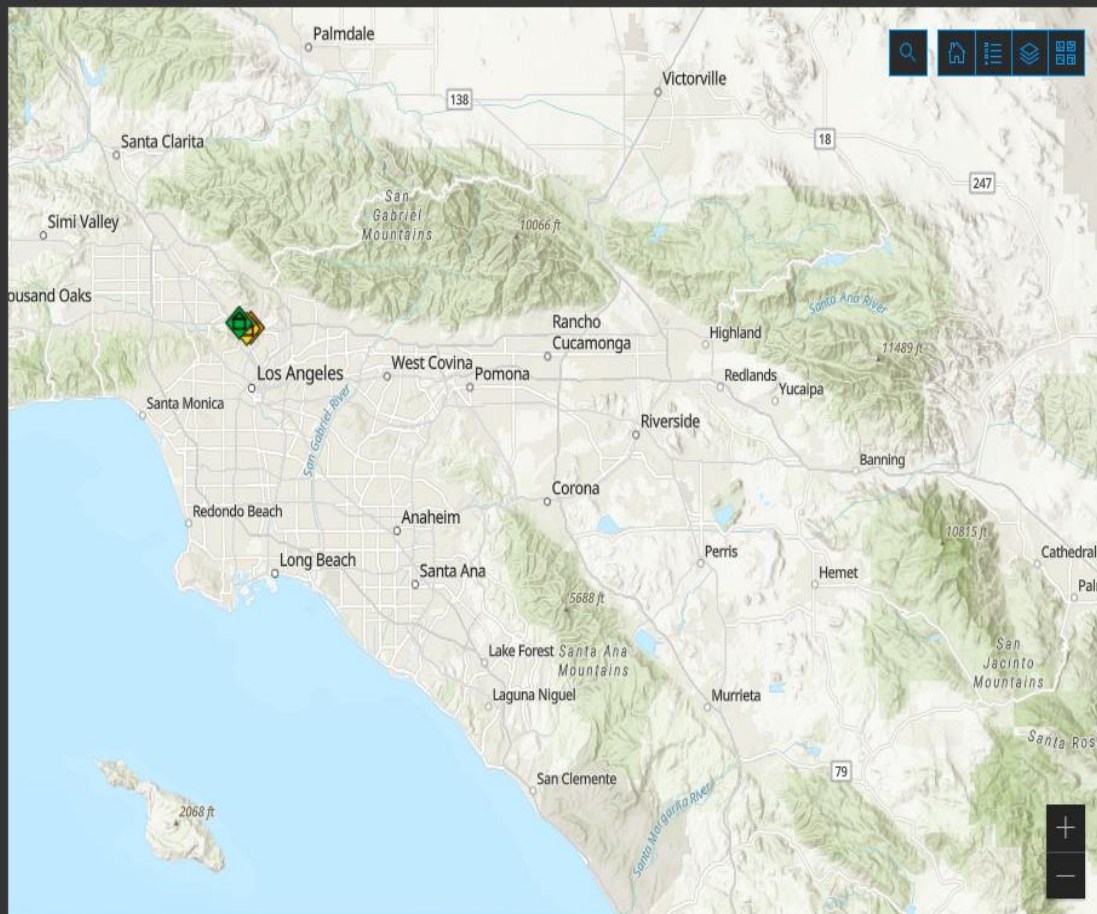
## Dashboard Controls

Team Name

No category selected

Squad

No category selected



Structure, no damage by  
Glendale, Anthony.DeLaSota@longbeach.gov\_L  
ongBeachCA

🕒 Upload 4/28/2022, 10:22 AM

📍 11S LT 8263 8003  
overpass intact

Structure, damaged by  
Glendale, Anthony.DeLaSota@longbeach.gov\_L  
ongBeachCA

🕒 Upload 4/28/2022, 10:17 AM

📍 11S LT 8419 7898  
elderly stuck in elevator

Structure, failed by  
Glendale, Anthony.DeLaSota@longbeach.gov\_L  
ongBeachCA

🕒 Upload 4/27/2022, 10:19 AM

📍 11S LT 8503 7914  
bldg collapsed

## Waypoints

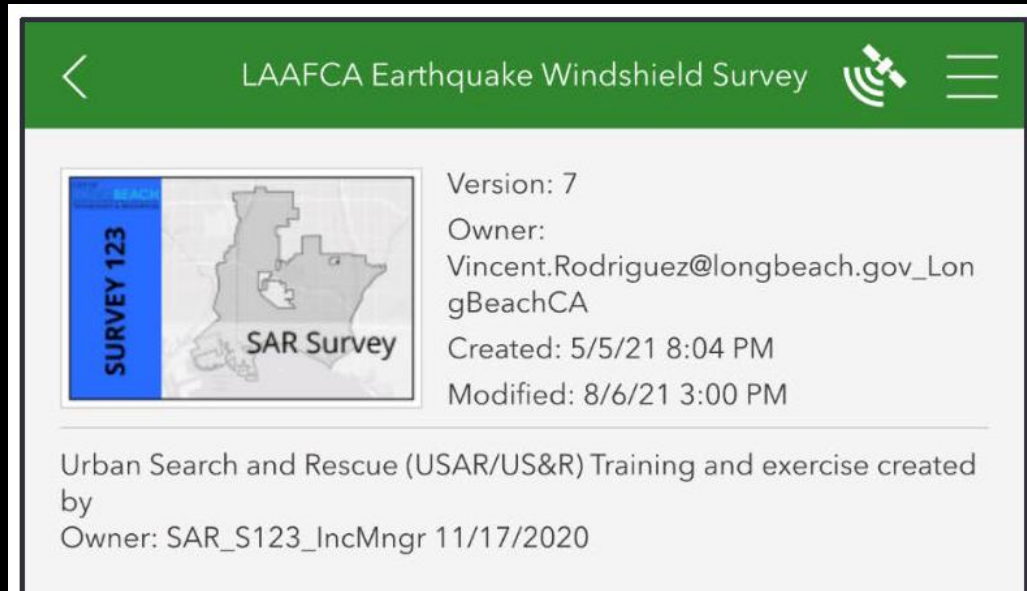
# 3

## +0 today



## Monterey Park Fire Department

# RTG WINDSHIELD SURVEYS



\* Code only works in Survey123,  
NOT QuickCapture



Monterey Park Fire Department

# FEMA SARCOP SEARCH & RESCUE COMMON OPERATING PLATFORM



Monterey Park Fire Department



# Objectives

Collect field data for situational awareness and decision-making with regards to:

1. Life Safety
2. Damage
3. Hazards
4. Incident Support

This provides a common operating platform for both response and recovery.



Monterey Park Fire Department



# Common Operating Platform

“Where are we responsible for search and rescue?”

Branches and Divisions determined by the incident.

“Where is my team assigned to?”

Segments created by Planning and Operations.

“Where are areas that have / have not already been covered?”

Tracklogs and waypoints created by Task Forces

“Where are areas or structures that need follow-up?”

Waypoints marked as “Needs Follow-up” and incomplete segments.



Monterey Park Fire Department

# Interoperability – Who is using this approach?

28 FEMA Urban Search and Rescue Teams

State Search and Rescue Agencies

- South Carolina
- Texas
- Louisiana
- Mississippi
- Alabama
- Florida
- ...and growing

International Search and Rescue Advisory Group\*



*2021 Spring Tabletop Exercise Participants*



*\*INSARAG uses different forms, interoperable technology*



Monterey Park Fire Department



National SAR Geospatial Coordination

This Website is a PILOT Project and not intended for real-world use at this time.



Using ArcGIS  
Hub and  
Partnered  
Collaboration  
to securely  
share  
between  
agencies.

## National Search and Rescue Geospatial Coordination

FEMA created a National Search and Rescue Geospatial Coordination (NSARGC) website to facilitate data sharing, collaboration and situational awareness for all Federal, State, Local, Tribal, Private Sector and NGO partners responding to disaster response under [Emergency Support Function #9](#).

To access the NSARGC Deployment Website, please fill out and submit the survey linked below.

[Request Access](#)

After you fill out this survey, you will receive an email from [fema-usr-gis@fema.dhs.gov](mailto:fema-usr-gis@fema.dhs.gov) saying whether you have been granted access.

Already have access? Use the link below to view the NSARGC Deployment Website.

[View NSARGC Website](#)

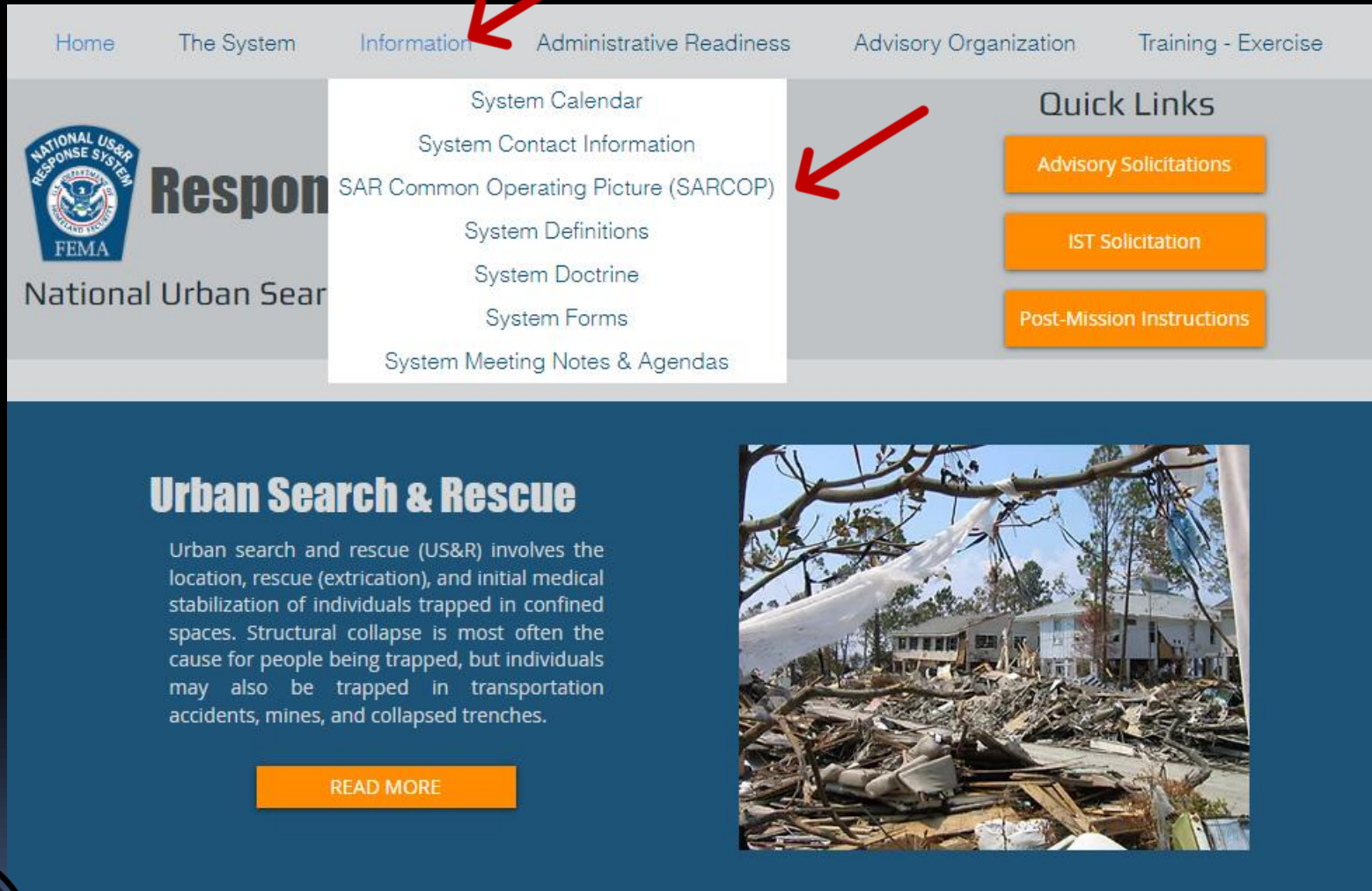
**FEMA US&R Teams:** Contact your team Tech Info Specialist for your credentials to access the Deployment Website



Monterey Park Fire Department

<https://national-sar-geospatial-coordination-fema.hub.arcgis.com/>

# RESPONSESYSTEM.ORG/SARCOP




The screenshot shows the website interface for ResponseSystem.org/SARCOP. The top navigation bar includes links for Home, The System, Information, Administrative Readiness, Advisory Organization, and Training - Exercise. A red arrow points to the 'Information' link. Below the navigation bar, the left sidebar features the National US&R Response System FEMA logo and the text 'National Urban Search and Rescue'. The main content area has a dropdown menu open under 'Information', with a red arrow pointing to the 'SAR Common Operating Picture (SARCOP)' link. Other links in the dropdown include System Calendar, System Contact Information, System Definitions, System Doctrine, System Forms, and System Meeting Notes & Agendas. To the right, a 'Quick Links' section contains three orange buttons: 'Advisory Solicitations', 'IST Solicitation', and 'Post-Mission Instructions'. Below this, there is a section titled 'Urban Search & Rescue' with a descriptive paragraph and a 'READ MORE' button. To the right of the text is a photograph of a disaster scene with debris and damaged buildings.

Home The System **Information** Administrative Readiness Advisory Organization Training - Exercise

**System Calendar**  
**System Contact Information**  
**SAR Common Operating Picture (SARCOP)**  
**System Definitions**  
**System Doctrine**  
**System Forms**  
**System Meeting Notes & Agendas**

**Quick Links**  
**Advisory Solicitations**  
**IST Solicitation**  
**Post-Mission Instructions**

**Urban Search & Rescue**  
Urban search and rescue (US&R) involves the location, rescue (extrication), and initial medical stabilization of individuals trapped in confined spaces. Structural collapse is most often the cause for people being trapped, but individuals may also be trapped in transportation accidents, mines, and collapsed trenches.  
**READ MORE**



Monterey Park Fire Department

# NAPSG SANDBOX (RED = TRAINING)



## Response System

National Urban Search & Rescue Response System

### Quick Links

Advisory Solicitations

IST Solicitation

Post-Mission Instructions

### Search & Rescue Common Operating Platform (SARCOP)

The following references should be used for field data collection as well as current SARCOP documentation

## REAL WORLD ONLY!

SAR Common Operating Platform

\*Requires your FEMA [or](#) SUSAR ArcGIS Online username and password to login. If you need assistance, please contact [fema-usr-gis@fema.dhs.gov](mailto:fema-usr-gis@fema.dhs.gov) or your SUSAR ArcGIS Online administrator.

## TRAINING ONLY!

Training Sandbox

Please contact [jdoke@publicsafetygis.org](mailto:jdoke@publicsafetygis.org) if you run into any issues or have questions about the NAPSG Foundation Training Website or materials.

Field Data Documentation and Rules of Engagement



Monterey Park Fire Department

# SANDBOX DASHBOARD DEMO



Monterey Park Fire Department





About This Dashboard

- This Dashboard is used for Task Force tactical operations.
- Use the tabs below to show new "elements" of information.
  - Use the slider panel (tab on left) to access the Dashboard Controls to filter data based on your interests.
  - Navigate the map by searching for places or using your mouse to zoom in and out (HINT: Hold shift and click to draw a zoom box).

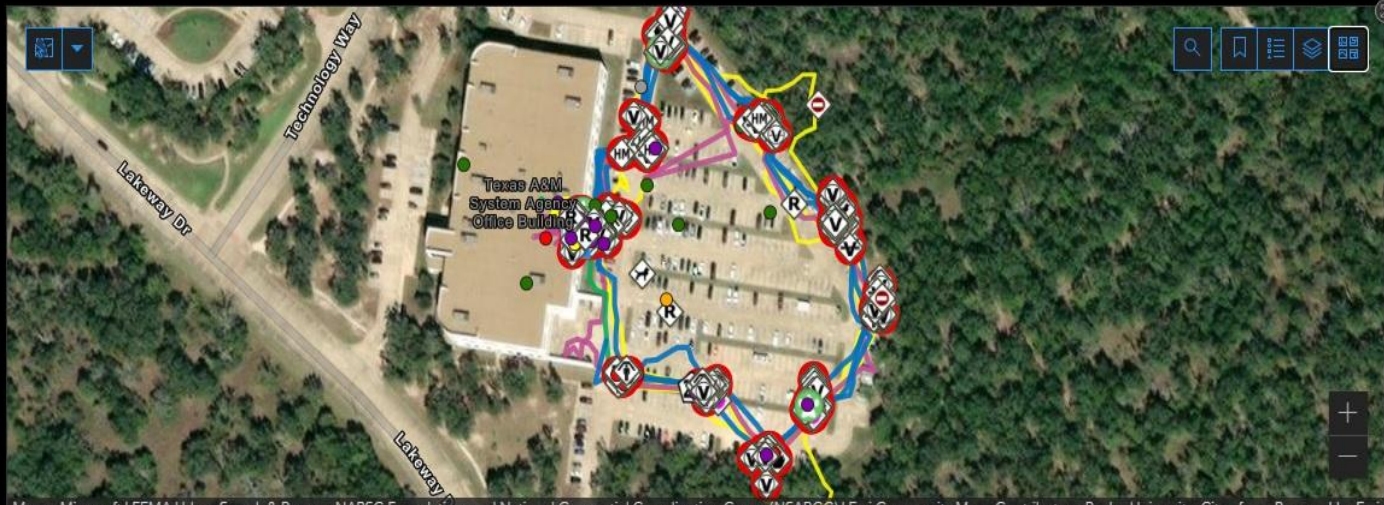
Incident Data - Wide Area Search Field Data

Waypoints

Waypoint

- Structure - Unaffected
- Structure - Affected
- Structure - Minor
- Structure - Major
- Structure - Destroyed
- Structure - Unknown
- ▲ Assisted
- Ⓔ Evacuated
- Ⓓ Rescued
- Ⓐ Shelter in place

- About Incident Branches Divisions



Maxar, Microsoft | FEMA Urban Search & Rescue, NAPSG Foundation, and National Geospatial Coordination Group (NSARGC) | Esri Community Maps Contributors, Baylor University, City of ... Powered by Esri

- Map Waypoint Tally People Damage Segment Status Waypoints Per Day RST and HAZ

Waypoints

📍 15,517

+109 Today

Human Interactions

👤 3.1k

+35 Today

Assists, Rescues, Evacuations, and Shelter-in-Place.

Last update: 2 minutes ago

Damage Assessments

🏠 8,120

+40 Today

Rapid damage assessment only.

Last update: 2 minutes ago







## Waypoint List

## Structure - Unaffected by NAPSG-1

4/20/2020, 10:44 AM

17S LU 2279 3889

[Update Waypoint](#)

## Structure - Unaffected by NAPSG-1

4/20/2020, 10:21 AM

17S LU 2169 3952

[Update Waypoint](#)

## Structure - Minor by NAPSG-1

4/20/2020, 10:13 AM

17S LU 2176 3948

[Update Waypoint](#)

## Structure - Unaffected by NAPSG-1

4/20/2020, 10:08 AM

17S LU 2175 3946

[Update Waypoint](#)

## Structure - Destroyed by NAPSG-7

4/15/2020, 3:33 PM

17S LU 1798 3747

[Update Waypoint](#)

## Targeted search by

17SLU1203834182

[Update Waypoint](#)

## Targeted search by

17SLU1224134251

[Update Waypoint](#)

## Structure - Affected by NAPSG-1

4/15/2020, 9:17 AM

17S LU 2063 3964

[Update Waypoint](#)

## Targeted search by

17SLU1567235769

[Update Waypoint](#)

This list is sorted by time of entry with most recent at the top. Click on a waypoint for more details.

Last update: a minute ago

**Waypoints**

Tracks

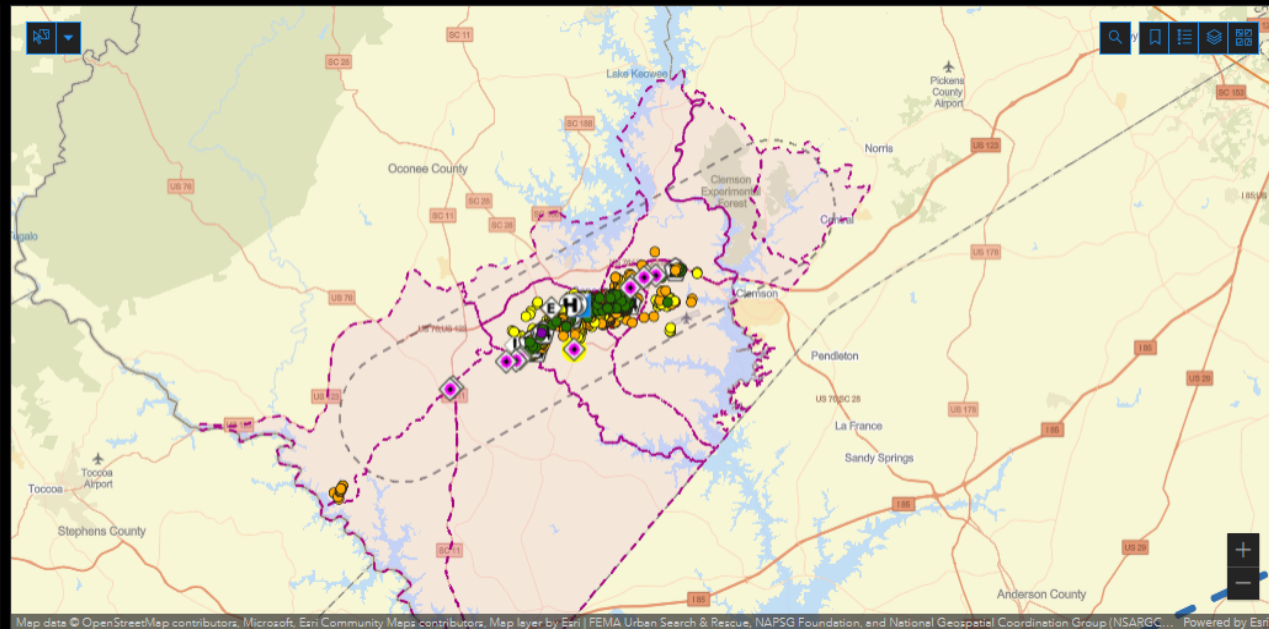
Incidents

Branch

Divisions

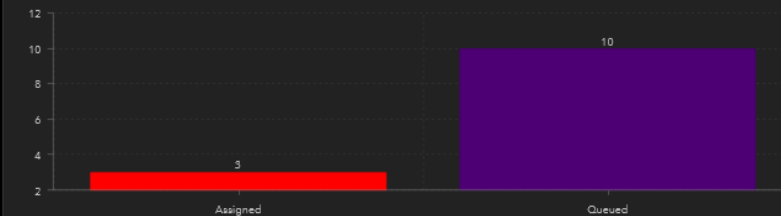
Segments

About



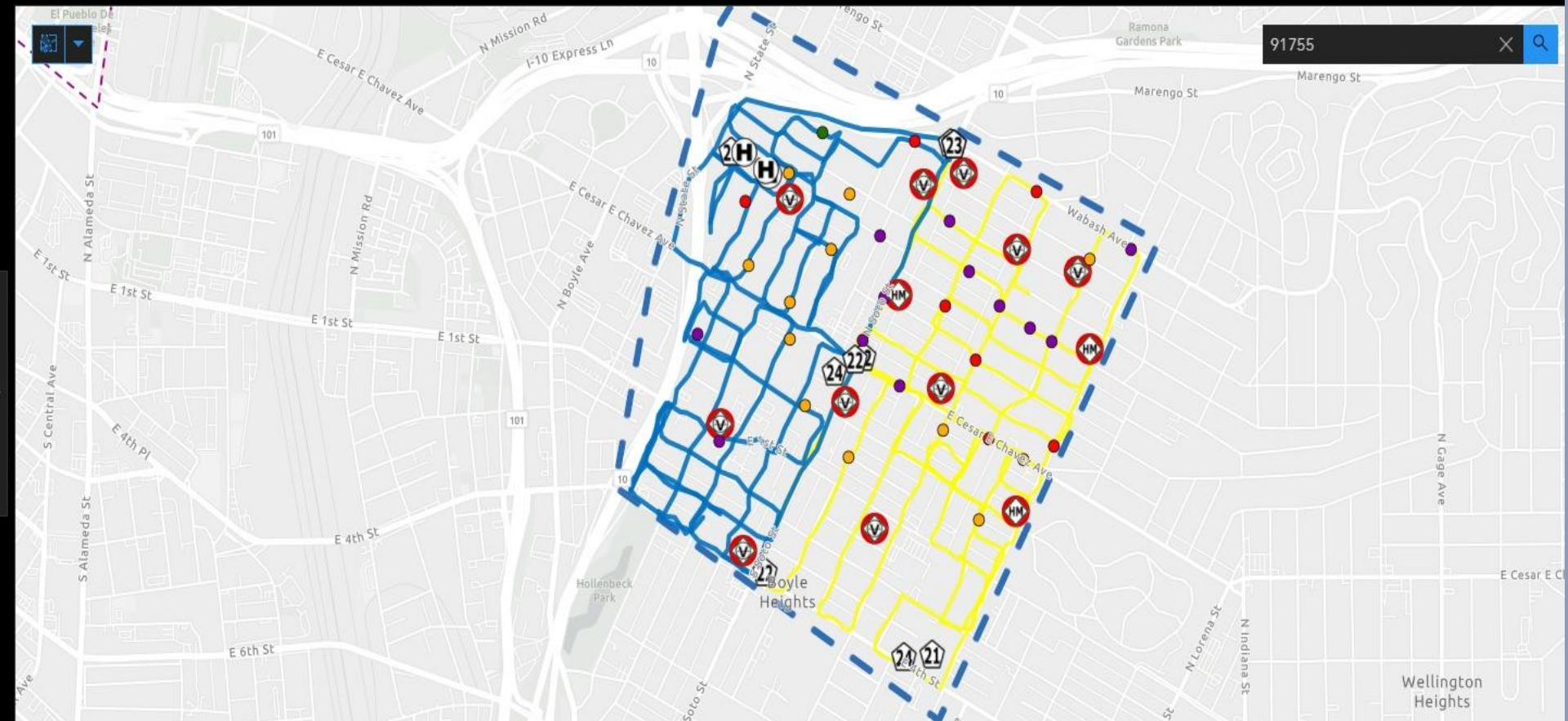
Waypoints  
**1,503**  
+0 Today

## Segment Status



Monterey Park Fire Department

This is a dashboard configured for tactical level decision making.



## Dashboard Controls



s, click  
Intel

by CA-



update: a minute ago

Filters may appear across the top of the Dashboard or in the side panel (click the arrow to expand).



Map data © OpenStreetMap contributors, Microsoft, Esri Community Maps contributors, Map layer by Esri | FEMA U... Powered by Esri

Waypoints  
**9,226**  
+0 Today

## Segment Status

500

null

Complete

Underway

Assigned

Queued

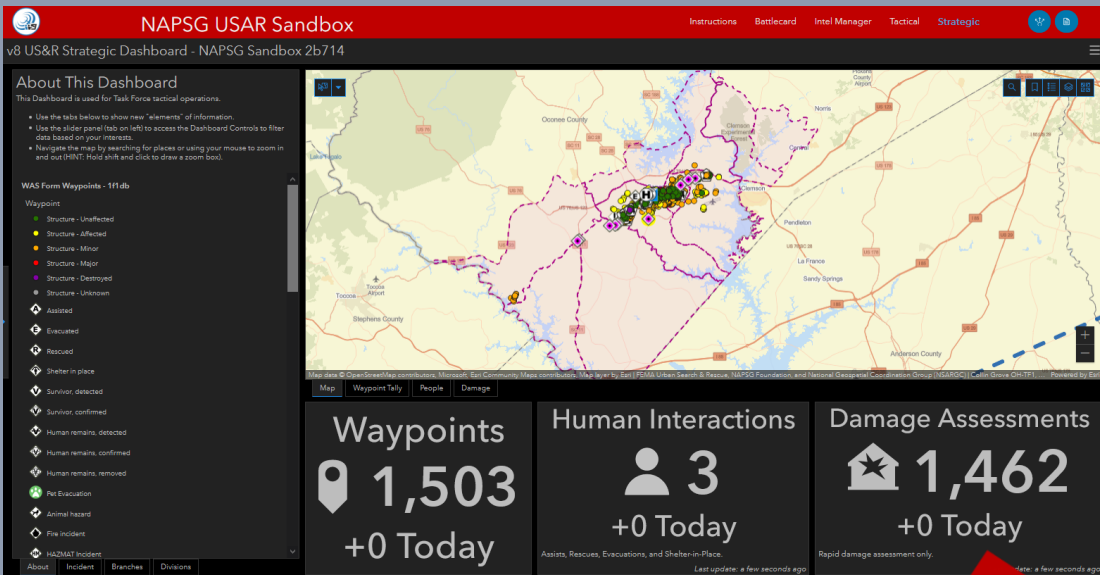
Click on a segment category to filter the map and other elements of information.

Segment Status

Victim Rescue Progress

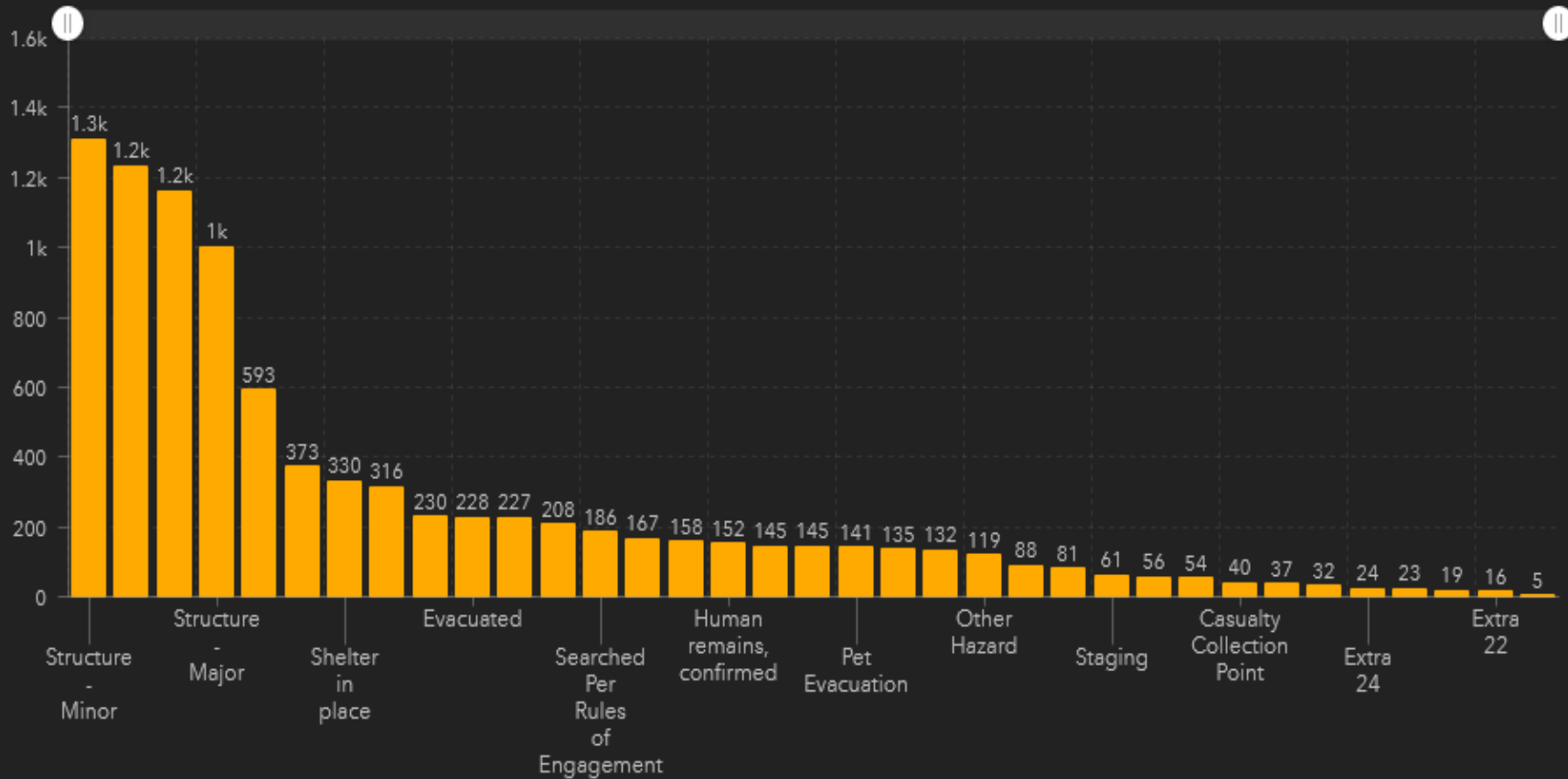


Monterey Park Fire Department



Monterey Park Fire Department





Last update: a few seconds ago

Map

Waypoint Tally

People

Damage

Segment Status

Waypoints Per Day



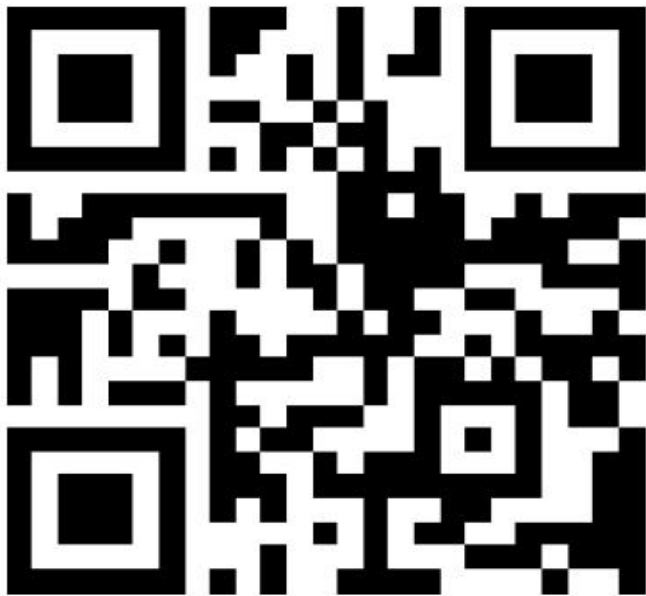
Monterey Park Fire Department





## NAPSG USAR Sandbox Battlecard (Printable)

1. Scan the QR Code to install ArcGIS QuickCapture on your mobile device.
2. Open app and "Continue without signing in"
3. Click "+" in the bottom right and scan the QR Code to open the Sandbox Project.
3. Proceed to the "**Additional Apps and Forms**" to access Survey123 for more detailed waypoints and photos. Install Survey123 and "Continue without signing in."



A3c71

\* Contact Monterey Park BoO  
Personnel with any issues  
regarding QR Code for  
Sandbox

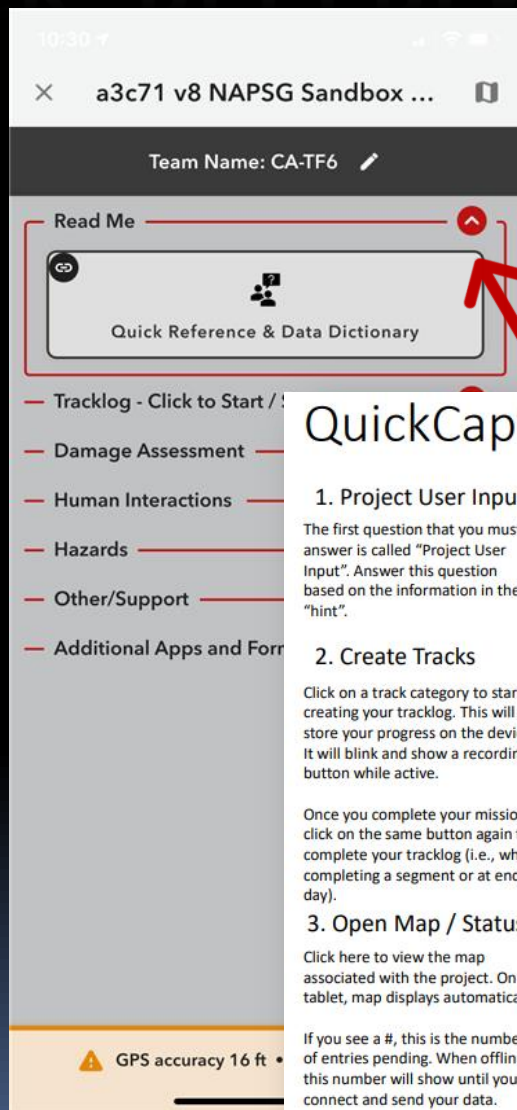
# ARCGIS QUICKCAPTURE



Monterey Park Fire Department



# QUICK REFERENCE GUIDE



## QuickCapture Field Reference Guide

### 1. Project User Input

The first question that you must answer is called "Project User Input". Answer this question based on the information in the "hint".

### 2. Create Tracks

Click on a track category to start creating your tracklog. This will store your progress on the device. It will blink and show a recording button while active.

Once you complete your mission, click on the same button again to complete your tracklog (i.e., when completing a segment or at end of day).

### 3. Open Map / Status

Click here to view the map associated with the project. On a tablet, map displays automatically.

If you see a #, this is the number of entries pending. When offline, this number will show until you connect and send your data.



### 4. Create Waypoint

Click on a waypoint category to collect it. Photo – you may be prompted for an optional or required photo. Button User Input – Depending on the type of point, you will be asked an additional optional or required question. Click DONE when you are ready.

### 5. Edit Data

If you want to edit the location of the point because it isn't accurate (see GPS accuracy) or you're not close to your observation, click on the pencil icon, then drag the pin to the correct location (e.g., A-side of structure for damage assessment).

### 6. Delete Data

If you made a mistake, click the trash can icon to delete the point and start over. If you missed an opportunity to edit or delete the data, it can be edited in Survey123 or the SAR Intel Manager.

### 7. Close Project

Click the 'x' when you are done collecting data or want to adjust your settings, open a new project, etc. If you are online this will send any pending data. If you are offline, you should remember to open the project when you go back online to send the data.



Monterey Park Fire Department

Updated on 3/24/2021 7:55 PM



# QUICKCAPTURE

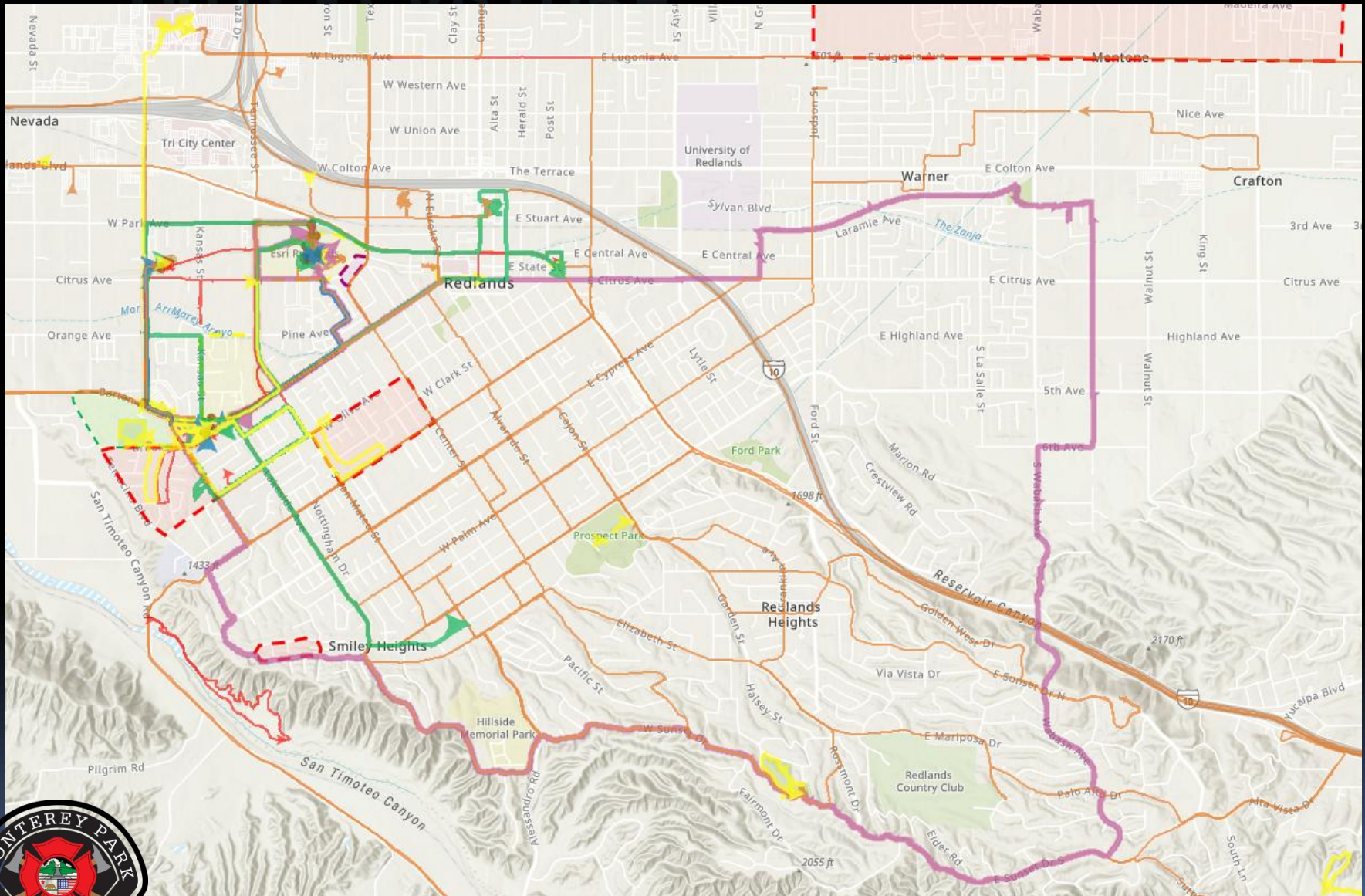
- Quick “Big button” data capture
- Ideal for at-speed data collection at the tap of a button
- Documenting areas searched with track logs (GPS units are a backup)
- “One-stop shop” for accessing other apps and links as needed



Monterey Park Fire Department



# QUICKCAPTURE

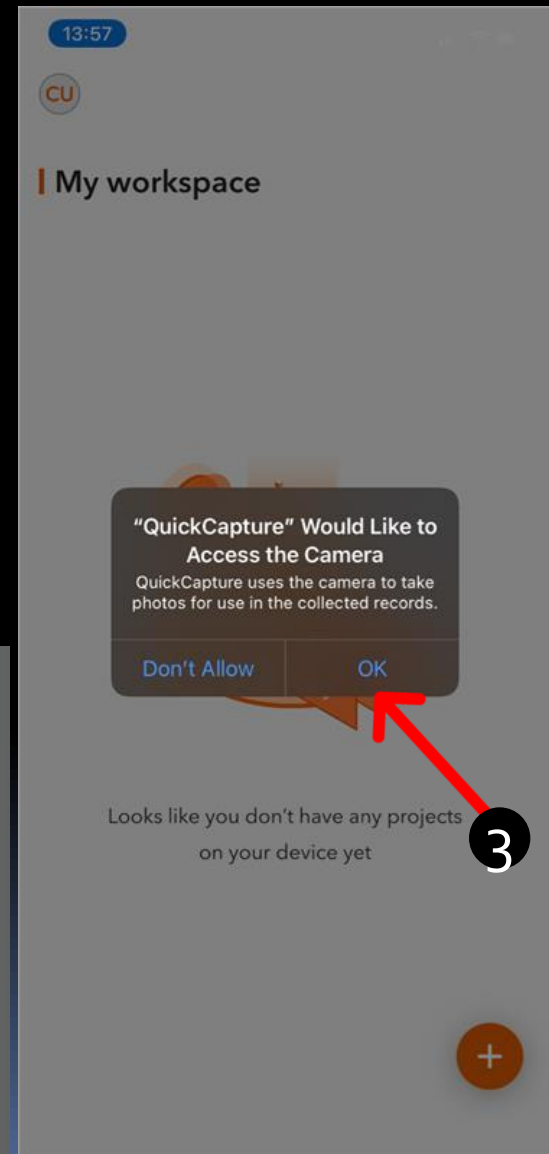
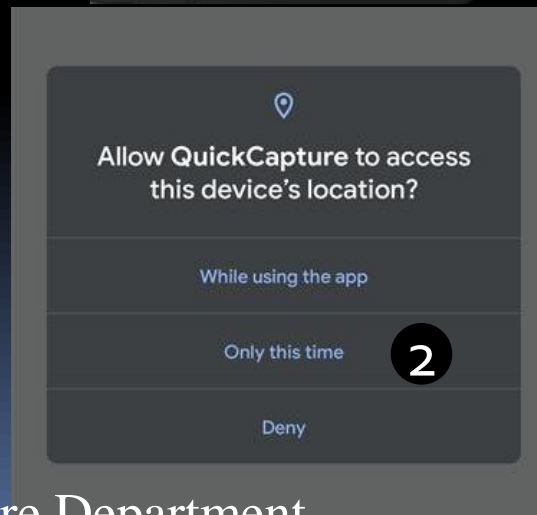
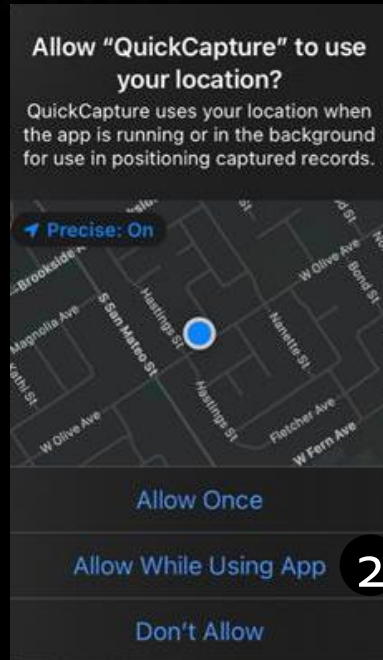
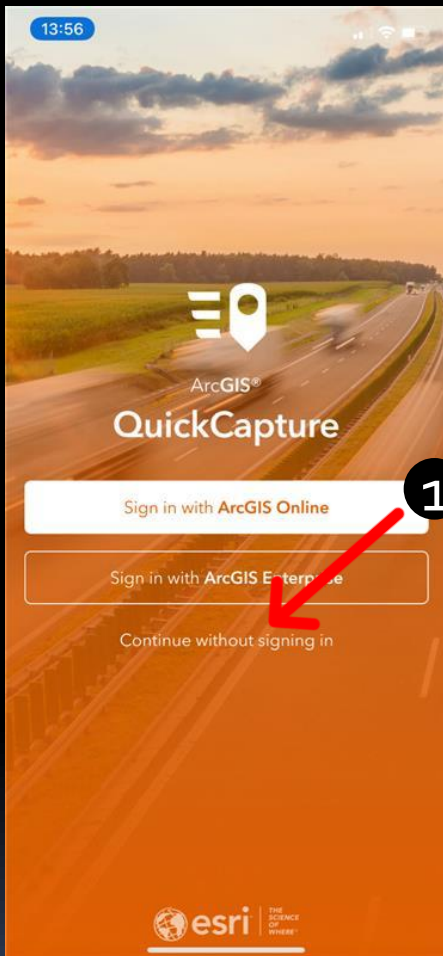


Monterey Park Fire Department





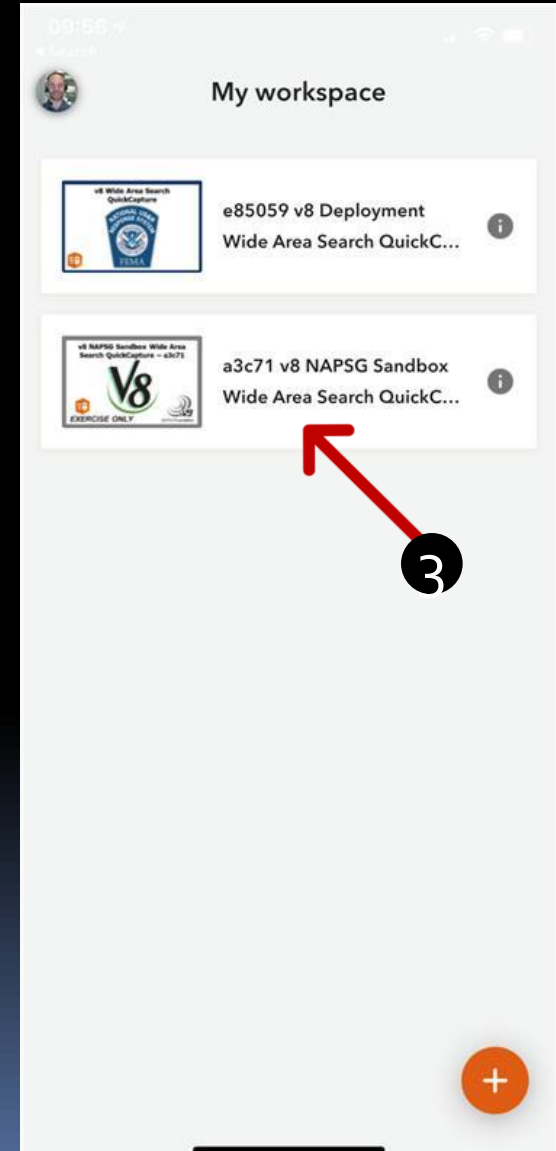
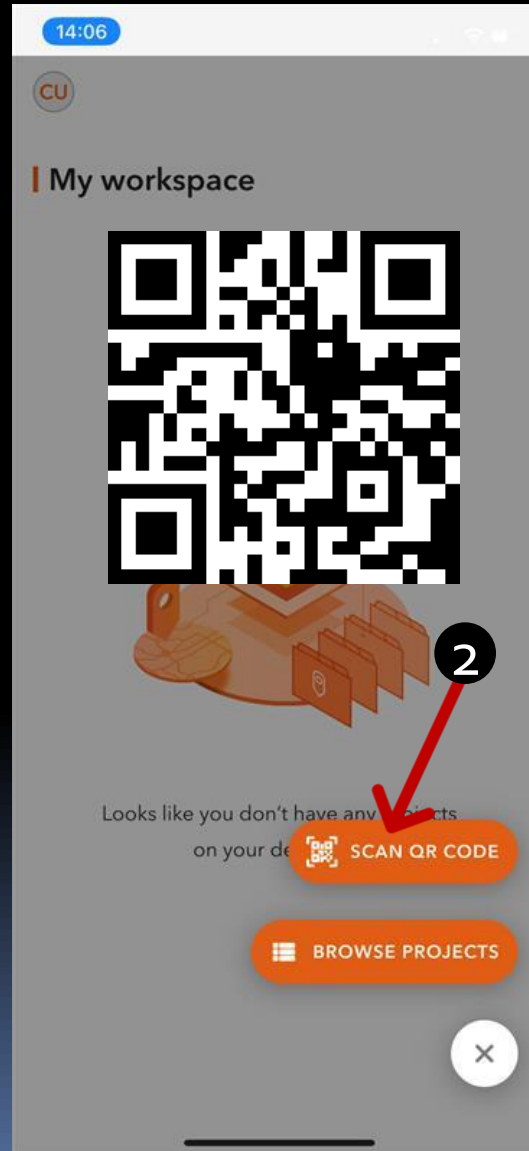
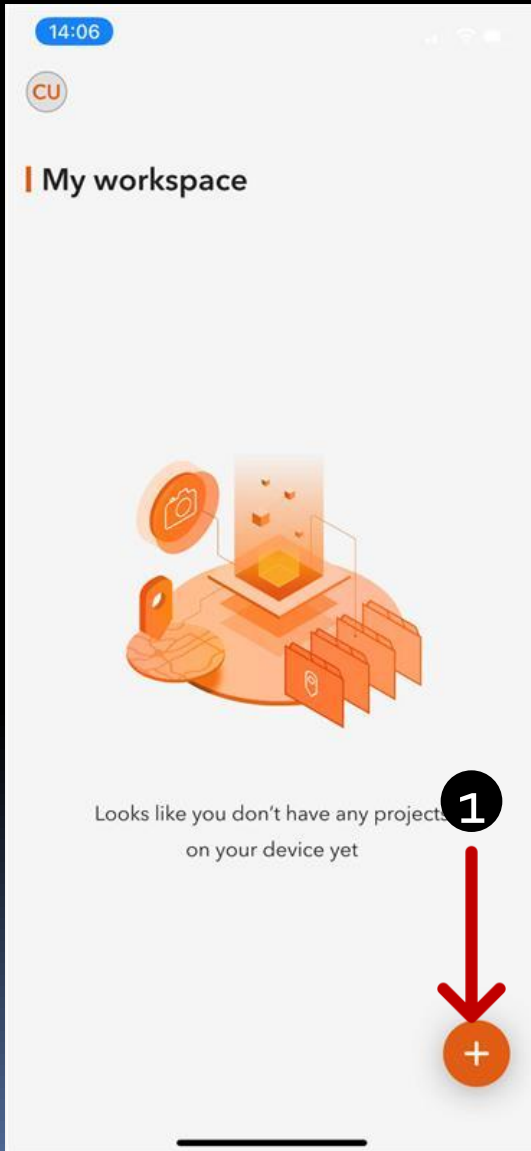
# QUICKCAPTURE



Monterey Park Fire Department



# QUICKCAPTURE





# QUICKCAPTURE - STEPS

10:06 AM

Search

X CANCEL

Team Name

Search

- ☐ AZ-TF1
- ☐ CA-TF1
- ☐ CA-TF2
- ☐ CA-TF3
- ☐ CA-TF4
- ☐ CA-TF5
- ☐ CA-TF6
- ☐ CA-TF7
- ☐ CA-TF8
- ☐ CO-TF1
- ☐ FL-TF1
- ☐ FL-TF2
- ☐ IN-TF1
- ☐ MA-TF1

1

2 - Squad ID

3 - Name

10:06 AM

Search

X a3c71 v8 NAPSG Sandbox ...

Team Name: CA-TF6

Read Me

Quick Reference & Data Dictionary

Tracklog - Click to Start / Stop

Recon Hasty / Rapid

Primary Secondary, low

Secondary, high Targeted

Damage Assessment

Human Interactions

Hazards

Other/Support

Additional Apps and Forms

GPS accuracy 16 ft • 13 ft recommended

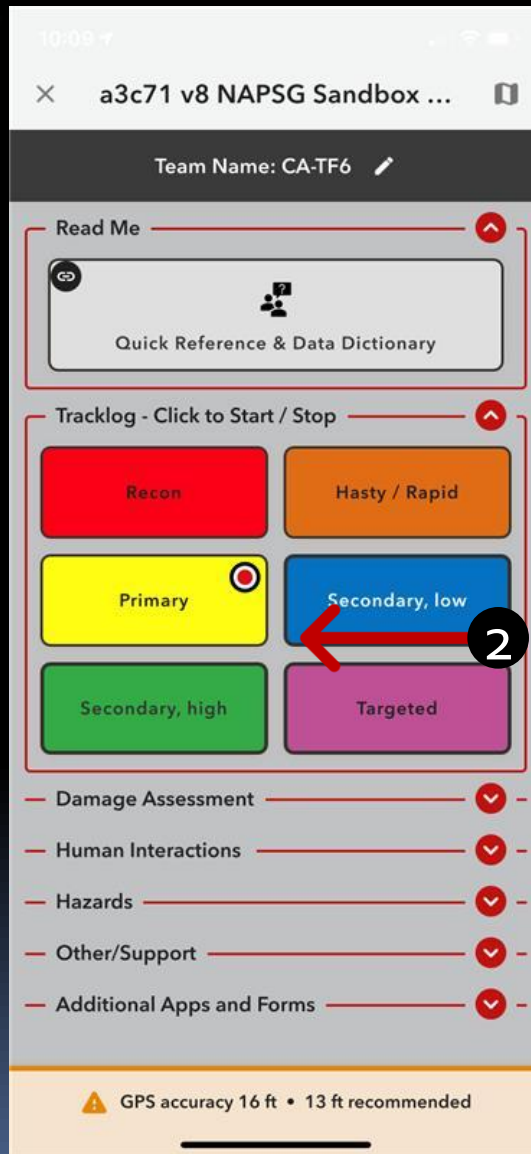
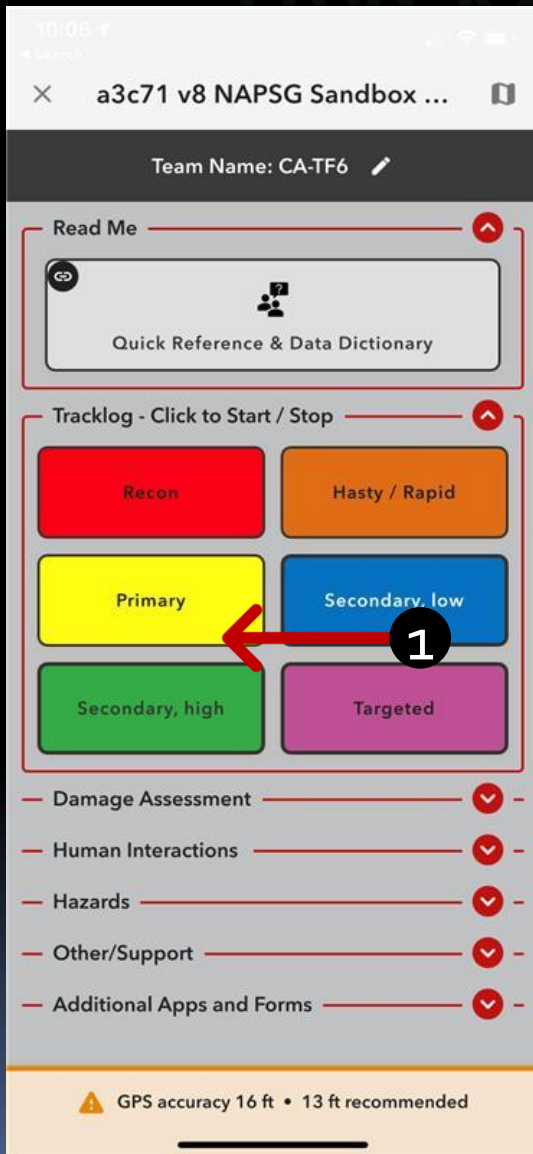
4



Monterey Park Fire Department



# TRACKS



1. Click on a track to start a tracklog. IT WILL BLINK when actively recording.
2. Click on the same button again to complete tracklog (ie. completing an assignment).







# TRACKS

13:38 [With Waypoints] NAPSG v... Squad Number: 2

Tracks (Click to Start, Click to Stop As...

**Team Comments**

Primary search complete in assignment areas 1 and 2. A few follow-up items indicated in waypoints for review.

Enter any comments or observations for this track / mission. This could be a des...

SKIP DONE

Location Update Damage Surveys Human Interactions

I The We

1 2 3 4 5 6 7 8 9 0

- / : ; ( ) \$ & @ "

# += . , ? ! ' <

ABC space return

🌐 🎤

3. Add comments and then DONE.

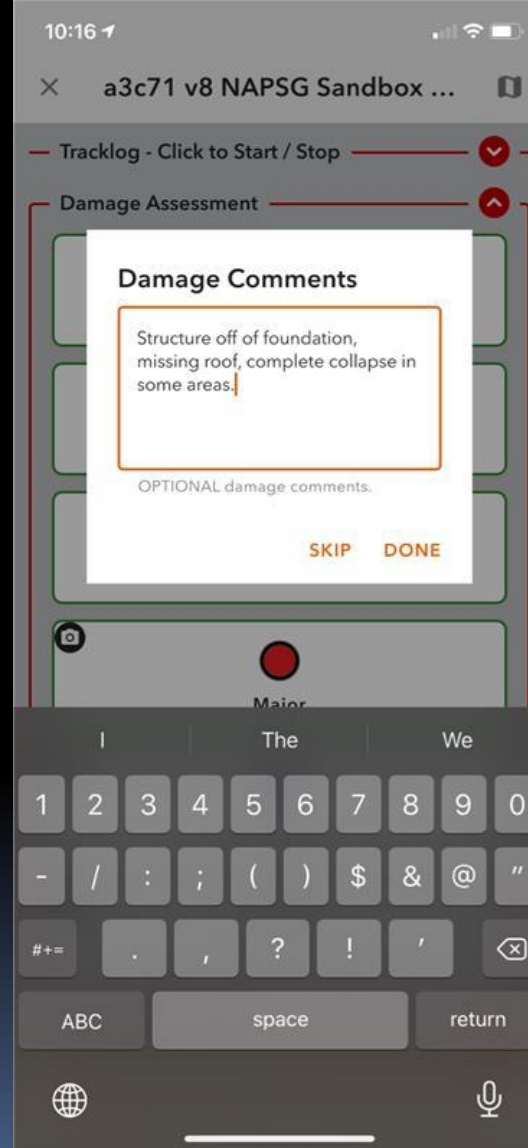
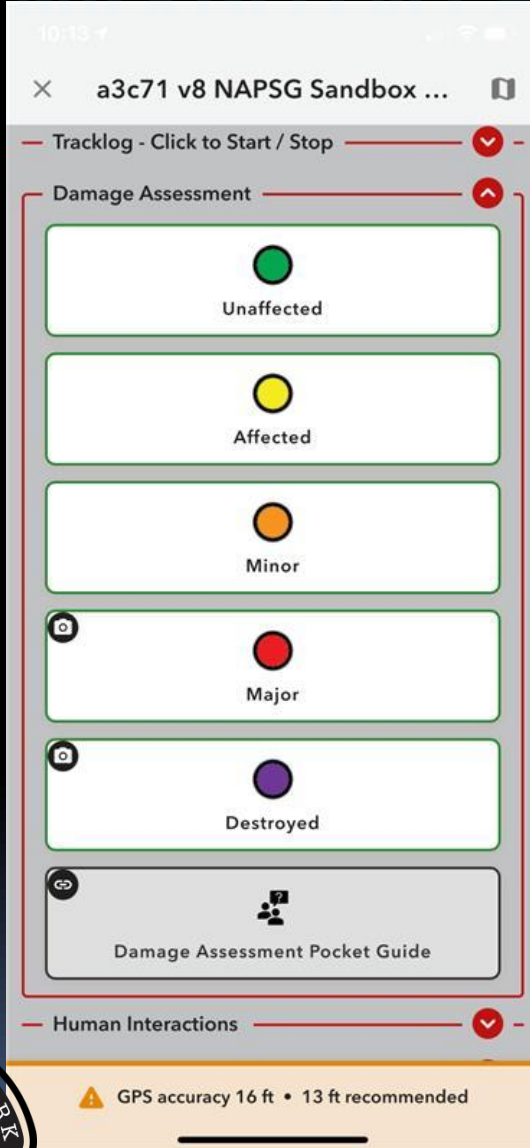
**Online - Sends the information to database and maps**

**Offline - Stores on device, until reconnected**





# WAYPOINTS



1. Click on a waypoint category.
2. Depending on the type of point, you will be asked for additional info.
3. Click DONE.

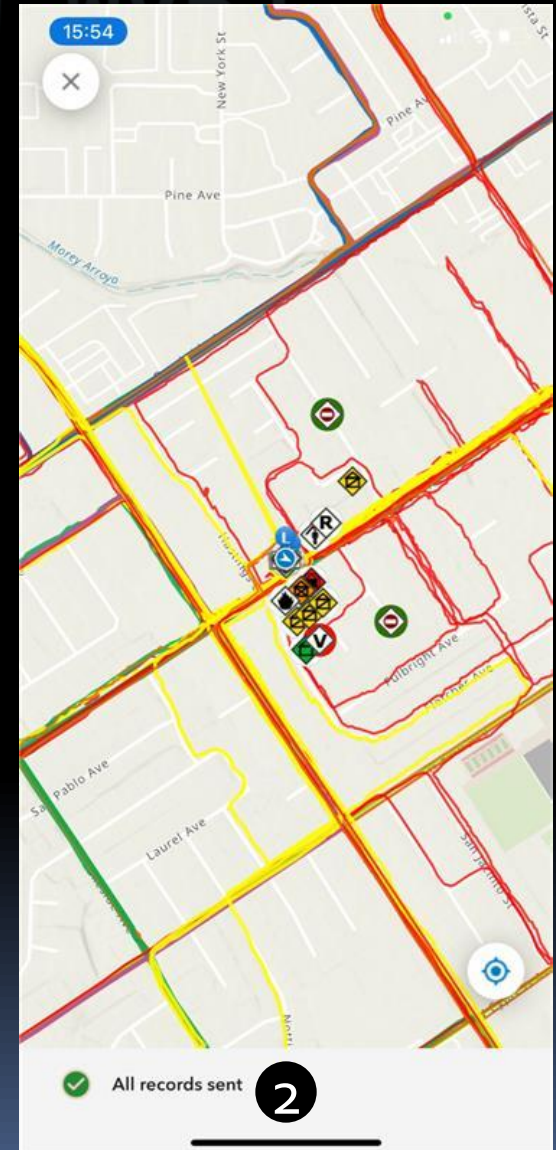
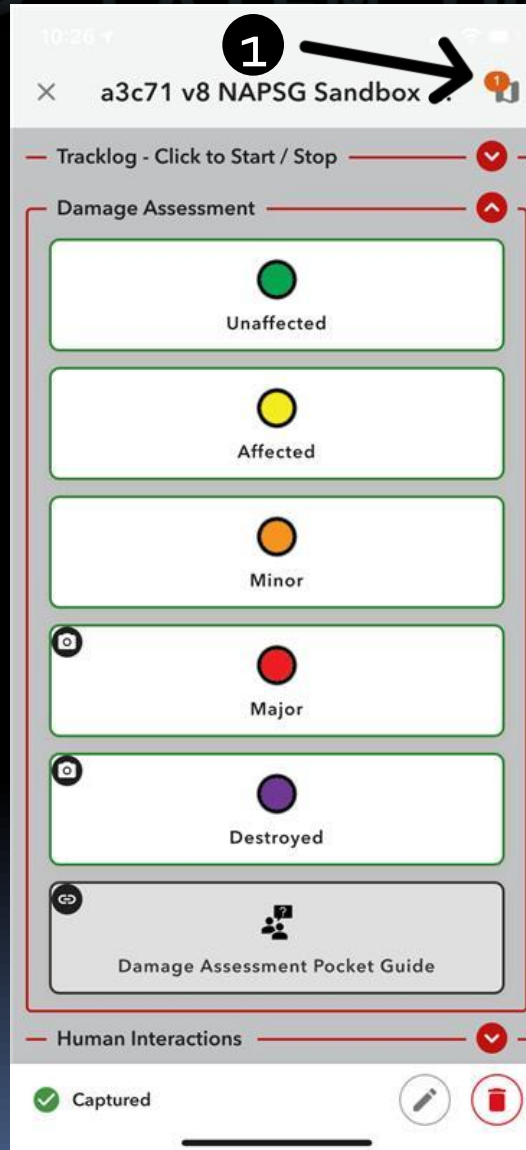


Monterey Park Fire Department



# WAYPOINTS (VIEW ON MAP)

1. Upper right icon - View on map. If you see a number, this is the number of entries still on the device waiting to be sent. **Check this one more time before shutting down devices at the end of each operational period!**
2. On a tablet, the map can be seen in landscape mode.



Monterey Park Fire Department

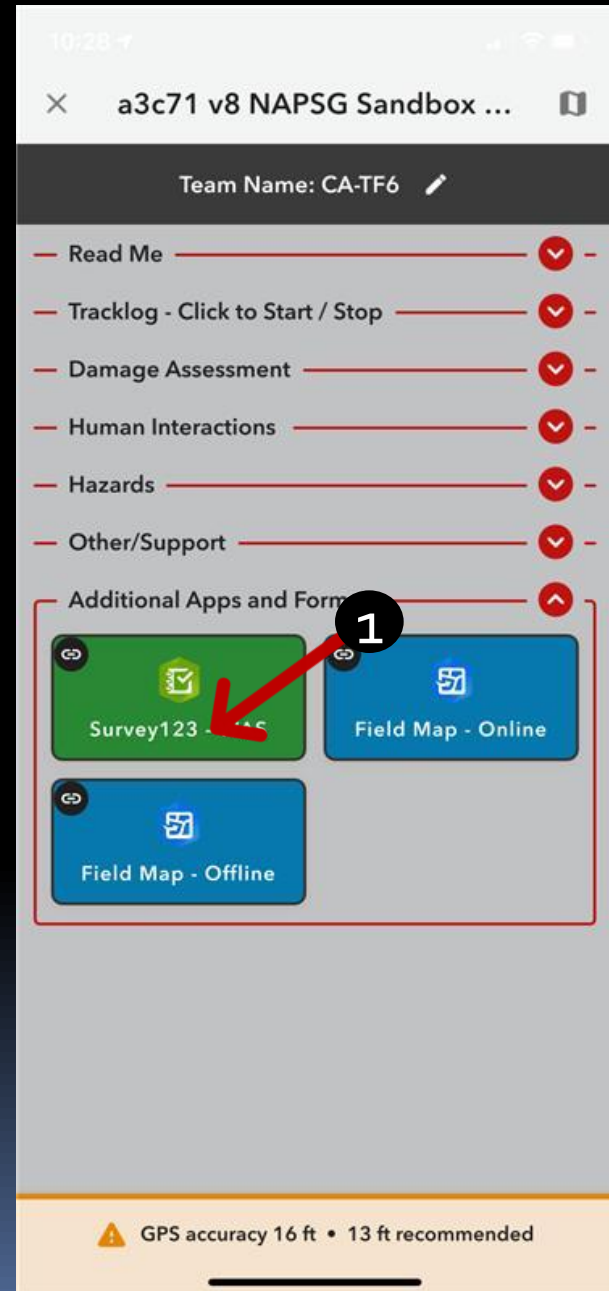


# APP LAUNCHER

1. "App launcher" buttons. These can link to other ArcGIS Apps, Survey123, Offline Maps, Dashboard, or even websites.



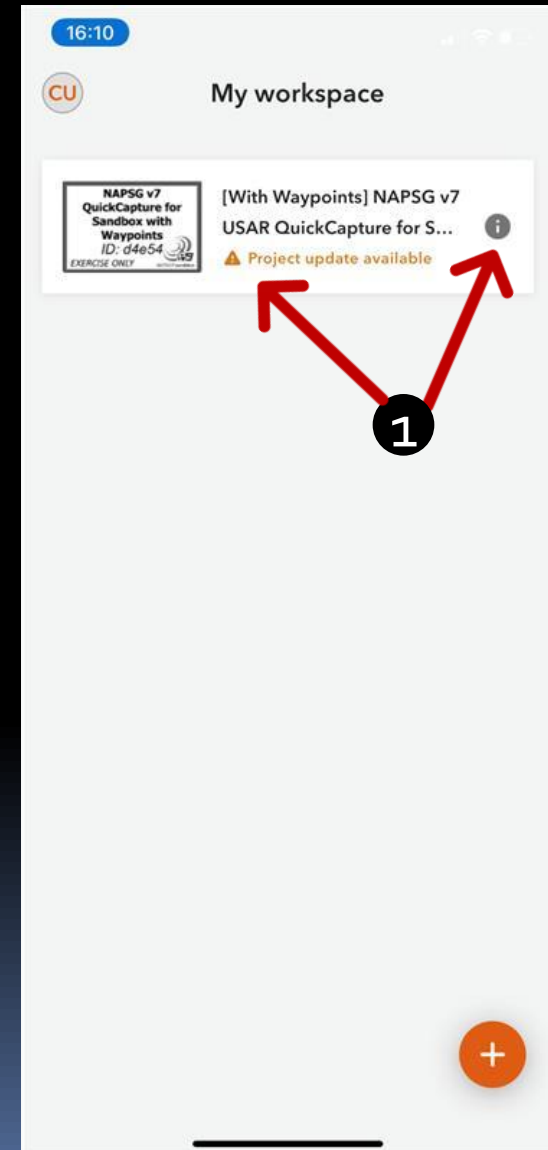
Monterey Park Fire Department





# PROJECT UPDATES

1. Check "My workspace" and the project details **BEFORE** deploying to make sure you have all updates. This is also how you can share the project with others via link or QR Code.



Monterey Park Fire Department



# QUICKCAPTURE DEMO



Monterey Park Fire Department

# Summary

- ArcGIS QuickCapture – Quick “big button” data capture and one-stop shop
- ArcGIS Survey123 – Form based, more detailed collection with photos, videos, files, etc.
- Dashboard – Overview of all data from both QuickCapture and Survey123 for tactical decisionmaking
- FEMA and CalOES currently have separate projects, but are using the same applications (VERIFY correct project)



Monterey Park Fire Department

# Questions?

## FIELD PRACTICE

- Log (1) Recon, (1) Primary, (1) Secondary Track
- Log (3) Waypoints in QuickCapture
- Log (1) Waypoint in Survey123 with Photo and Comments



Monterey Park Fire Department